

# EAGLE X software package 3.1.0

**FOR EAGLE6, 5, 4, 3 and LE**

update 12/09/2025

Thank you for downloading the EAGLE X software package for EAGLE6, 5, 4, 3 and LE. In this package you find the latest update of the EAGLE Manager X, ASCOM drivers and user manuals in PDF format.

**Note on ASCOM driver compatibility:**

PLL ASCOM Switch driver is compatible with EAGLE6, 5, 4 and LE. PLL ASCOM ObservingConditions is compatible with EAGLE6, 5, 4 that come with EYE sensor. But, if you use ECCO module together with EAGLE LE, you can also use the PLL ASCOM ObservingConditions driver with EAGLE LE. PLL ASCOM SafetyMonitor driver is compatible with EAGLE6, 5, 4 and LE.

	PLL ASCOM Switch	PLL ASCOM ObservingConditions	PLL ASCOM SafetyMonitor
EAGLE LE	YES	NO (it requires ECCO)	YES
EAGLE 4	YES	YES	YES
EAGLE 5	YES	YES	YES
EAGLE 6	YES	YES	YES

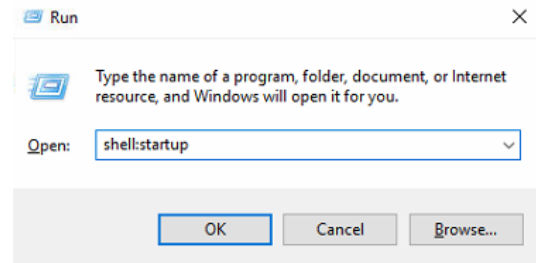
## IMPORTANT

**EAGLE Manager X is compatible with EAGLE6, 5, EAGLE4, EAGLE LE and EAGLE3 running Windows 10 (at least 1809) or Windows 11 Pro or Enterprise. Other EAGLE devices (based on Windows) are not compatible (EAGLE first generation and EAGLE2).**

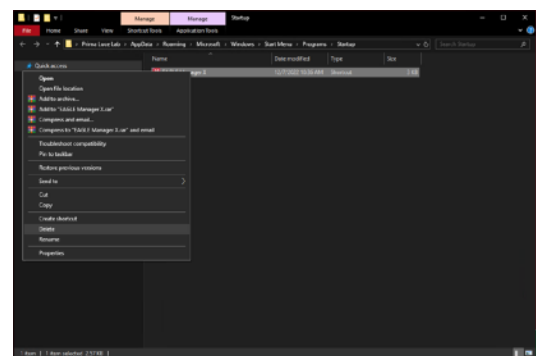
## ***How to install EAGLE Manager X if you are updating from previous versions of EAGLE Manager X***

In order to update to the new EAGLE Manager X, first of all you have to uninstall the previous one. Please follow these steps in order to uninstall the previous version of EAGLE Manager X and install the new EAGLE Manager X. Before upgrading please take note that all settings of EAGLE Manager X will be removed with this upgrade procedure.

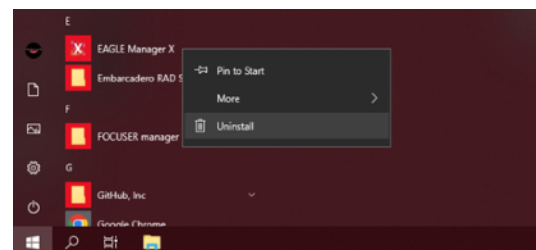
1) Close EAGLE Manager X by pressing the X button on the top-right part of its window. then press Start and type “Run”, then press enter to open it. Press Start.



2) If a previous version shortcut of EAGLE Manager X is present in the Startup folder, shortcut from the opened folder by selecting the link, making mouse right-click and selecting “Delete”. If in the Startup folder you can’t find any shortcut of EAGLE Manager X, you can proceed to step 3.



3) Press Start and scroll through the app list until you find EAGLE Manager X. Right click on it, choose “Uninstall”, then confirm.



4) Make double click on **EagleManagerX\_x.x.x\_Setup.msi** and a window will open: the install program is setting up prerequisites. It may take some time as Windows performs its security scan.

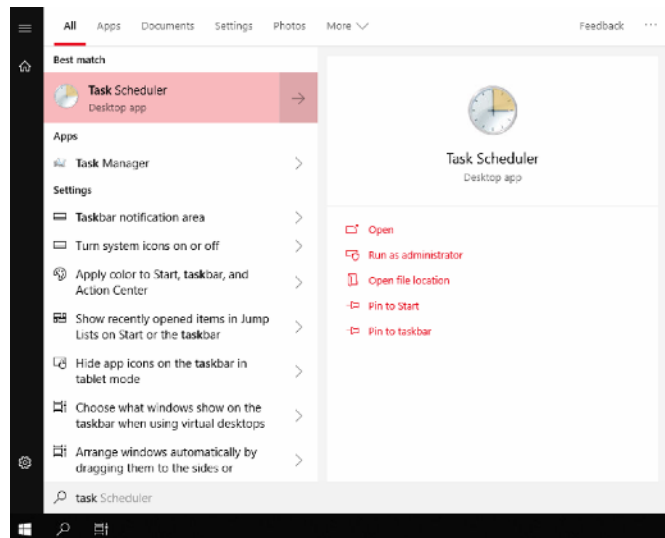
5) EAGLE Manager X is installed and you can find it in the Windows START menu.

6) Now reboot Windows and EAGLE Manager X will now open up automatically at startup.

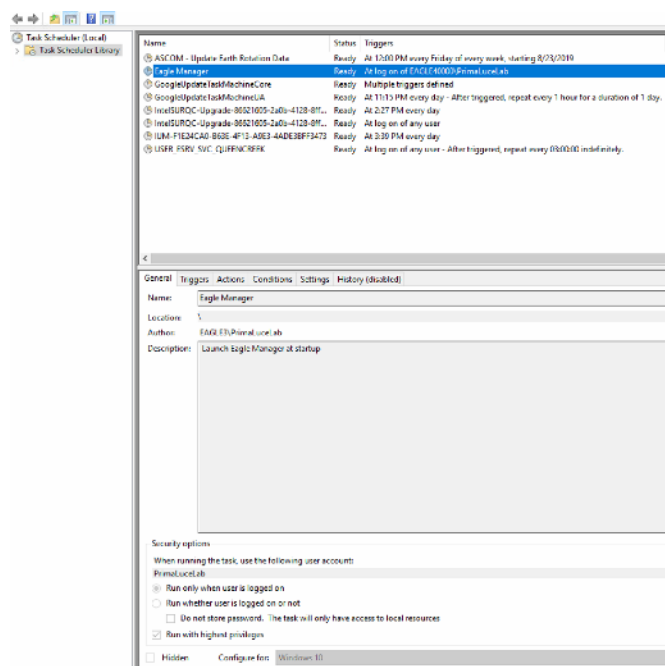
## How to install EAGLE Manager X if you are updating from previous EAGLE Manager 3.x or 4.x

In order to use the new EAGLE Manager X, first of all you have to disable the EAGLE Manager. Please follow these steps in order to disable the previous version of EAGLE Manager and install the new EAGLE Manager X.

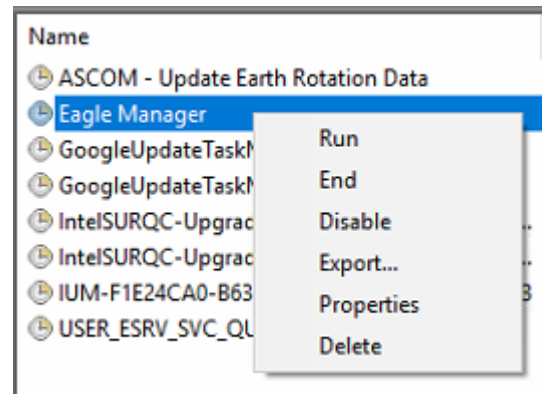
1) Close EAGLE Manager by pressing the X button on the top-right part of its window. then press Start and type “Task Scheduler”. Press enter to open it.



2) Select “Task Scheduler Library” on the left, if not already selected. In the list at the center, look for a row named “Eagle Manager”



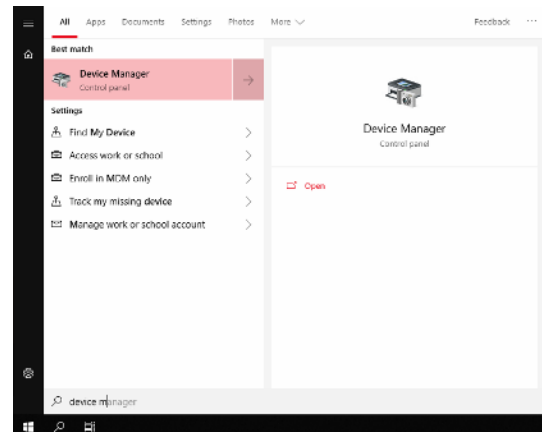
3) Right click the record, then press “Disable”.



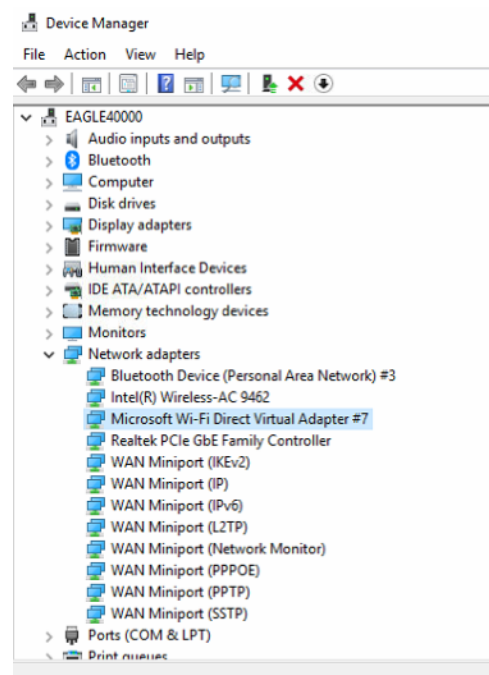
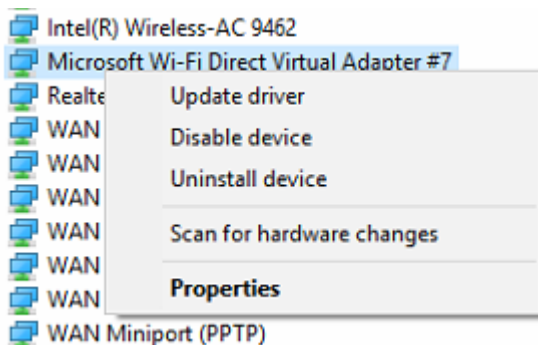
4) The Status should now be “Disabled” and this means that EAGLE Manager will no longer open at startup. Now you can close the Task Scheduler window.

Name	Status
ASCOM - Update Earth Rotation Data	Ready
<b>Eagle Manager</b>	<b>Disabled</b>
GoogleUpdateTaskMachineCore	Ready
GoogleUpdateTaskMachineUA	Ready
IntelSURQC-Upgrade-86621605-2a0b-4128-8ff...	Ready
IntelSURQC-Upgrade-86621605-2a0b-4128-8ff...	Ready
IUM-F1E24CA0-B63E-4F13-A9E3-4ADE3BFF3473	Ready
USER_ESRV_SVC_QUEENCREEK	Ready

5) To ensure a fully working wireless network by the EAGLE, we have to clear network configurations that may conflict with EAGLE Manager X. Press Start and begin typing “Device Manager”, then press enter to open it.



6) Click on View -> “Show hidden devices” and expand the “Network adapters” section. Look for every instance of “Microsoft Wi-Fi Direct Virtual Adapter #...”. For each of these, right click and select “Uninstall device”. After the uninstallation is completed, close the Device Manager window.

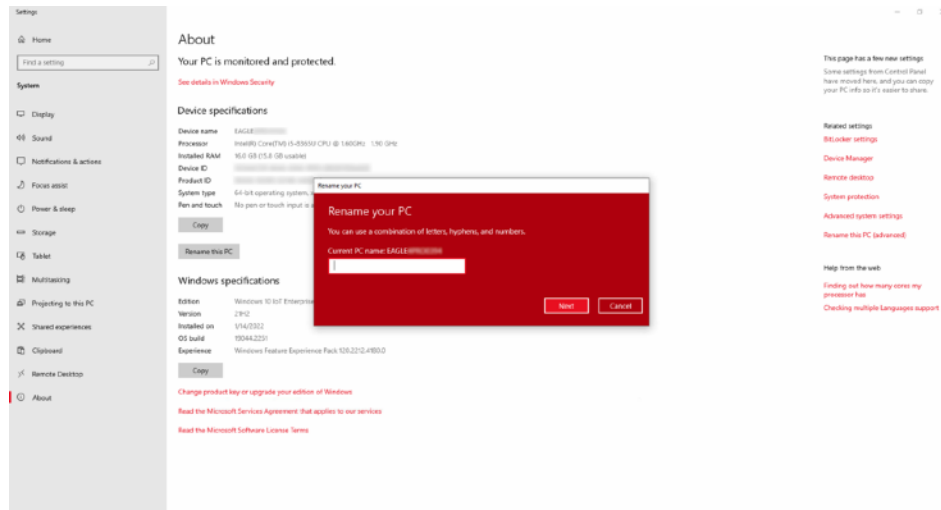


- 7) Make double click on **EagleManagerX\_0.xx.0\_Setup.exe** and a window will open: the install program is setting up prerequisites. It may take some time as Windows performs its security scan.
- 8) EAGLE Manager X is installed and you can find it in the Windows START menu.
- 9) Now reboot Windows and EAGLE Manager X will now open up automatically at startup.

## Troubleshooting

**Error: when I manually (or automatically with Startup folder) launch EAGLE Manager X, nothing happens (EAGLE Manager X doesn't start)**

Solution: Please make sure your Windows Computer name corresponds to EAGLE serial code. In order to check this, please go to Start -> Control Panel -> System and make sure that the "Device name" corresponds to your EAGLE serial number (for example "EAGLEXXXXX"). If it's not, please click on the "Rename" button and type your EAGLE's serial number.

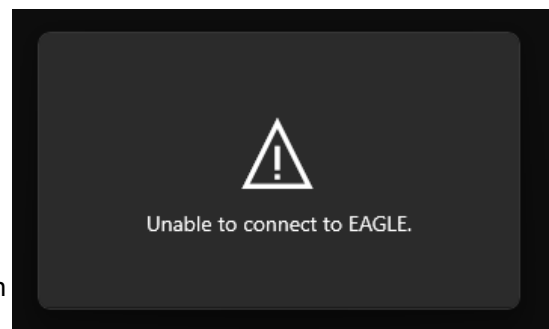


**Error: “Unable to connect to EAGLE”**

Solution: This error message can have one of the following reasons.

Legacy EAGLE Manager is open

Only one version of EAGLE Manager at a time can pilot EAGLE. Close legacy EAGLE Manager, then close and reopen EAGLE Manager X.



EAGLE Manager X has just been installed

EAGLE Manager X can occasionally not work right after installation. Try these solutions:

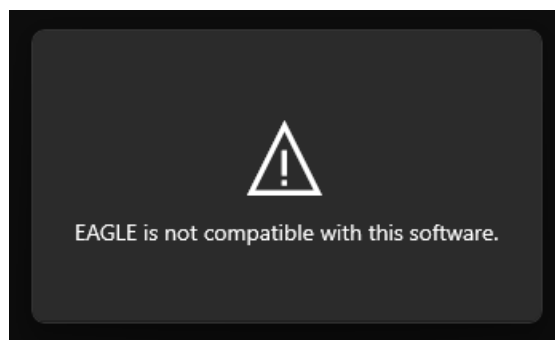
1. Close and reopen EAGLE Manager X.
2. Reboot EAGLE.
3. Uninstall, reboot EAGLE, then reinstall EAGLE Manager X.

EAGLE Manager X is installed on an incompatible device

Connection can fail when EAGLE has a firmware version that is not compatible with EAGLE Manager X or when there are problems with the EAGLE internal logic board.

### ERROR: “EAGLE is not compatible with this software”

Solution: EAGLE Manager X was installed on an EAGLE that is not supported. Please install EAGLE Manager X on a compatible EAGLE.



### ERROR: “Access point status is Error”

Solution: Follow the steps as previously described to clear network configurations, then close and reopen EAGLE Manager X. If you use previous EAGLE Manager, make sure to follow those steps again before using EAGLE Manager X. The technology used in previous EAGLE Manager to publish the access point conflicts with the one used in EAGLE Manager X.



### ERROR: “EAGLE firmware update error”

Solution: this error seems to happen if your Windows installation misses a library part of Visual C++ Redistributable.

Please download it from

[https://aka.ms/vs/17/release/vc\\_redist.x64.exe](https://aka.ms/vs/17/release/vc_redist.x64.exe)

and install it in your EAGLE. Then reboot Windows and update the firmware.

